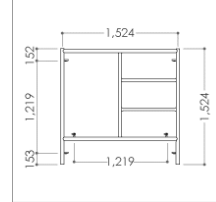
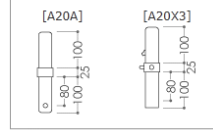


[1]梯子型枠 A1515B/A1515BX



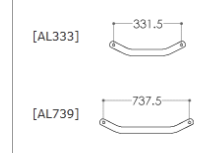
[2]連結ピン



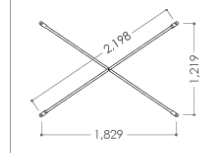
[2] Vピン VP2



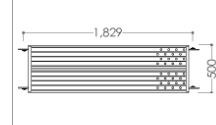
[3][4]アームロック



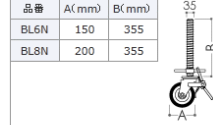
[5]精突 X1812



[6]鋼製足場板 THK518



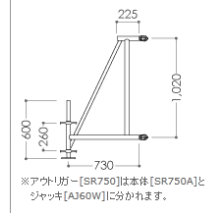
[7]ジャッキ付キャスター



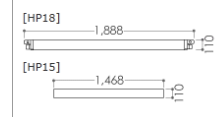
[9]手摺 BR18



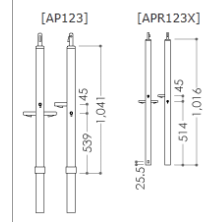
[13]アウトリガー SR750



[11][12]欄木



[8]手摺柱



[10]手摺 BR15



品名	1段	2段	3段	4段
作業床高さ(mm)	1,800~1,900	3,350~3,450	4,900~5,000	6,450~6,550
作業床幅(mm)	1,524			
作業床長さ(mm)	1,829			